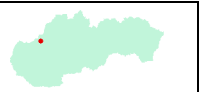


LZTN TREŇČÍN

ARP 485151N 0175932E

676 ft (206 m)

FIG
124,300



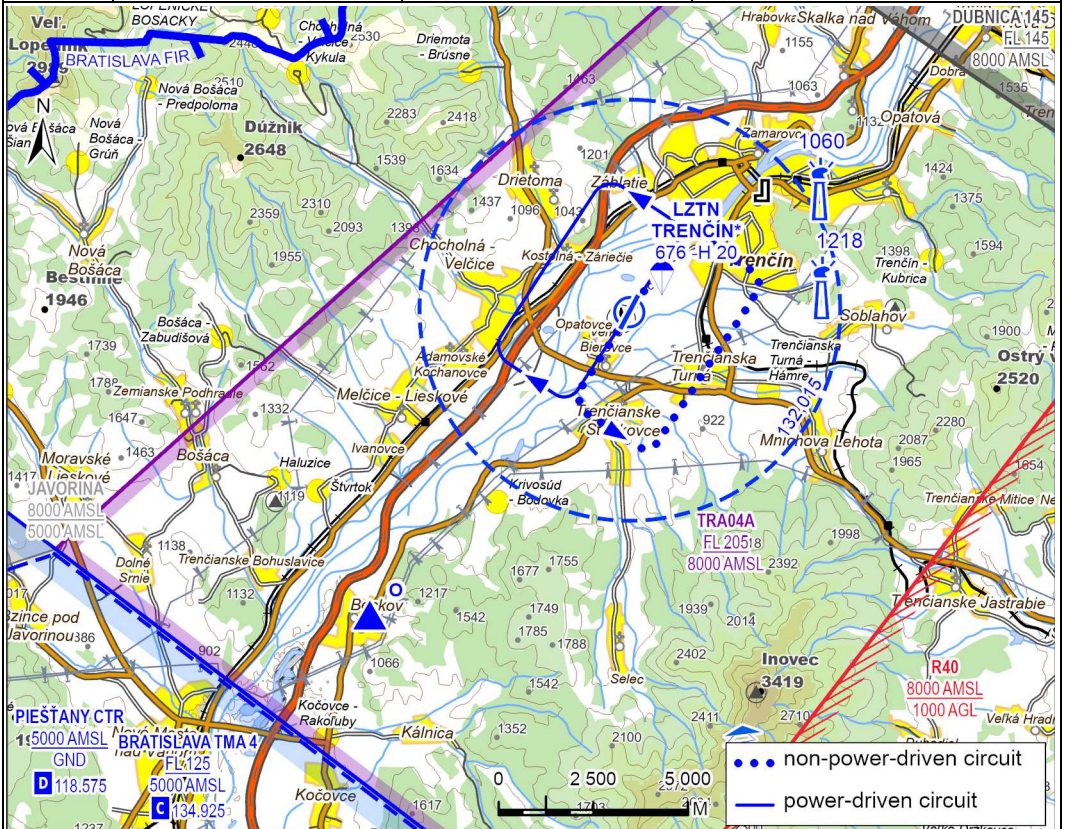
TREŇČÍN TRAFFIC
132,015

TREŇČÍN TRAFFIC
119,175 (alternate)

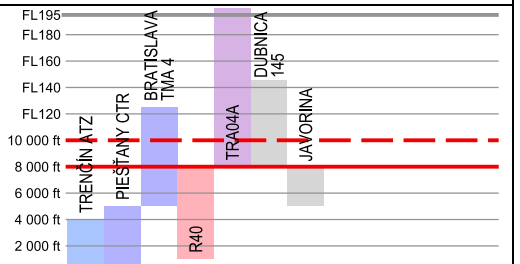
RWY	03L/21R 970 m	03R/21L 970 m	04/22 2 000 m
-----	------------------	------------------	------------------

+421/32/656 52 55
+421/32/656 52 18
Letecké opravovne Trenčín, a. s.
Legionárska 160
911 04 TREŇČÍN
twr@lotn.sk

VFR day	Circling: 1 000 ft (300 m) AGL	MON-FRI 0700-1200 (0600-1100)
	Non-public Domestic	



Last change: web addresses of other subjects operating at the aerodrome added




LZTN TREŇČÍN

ARP 485151N 0175932E


676 ft (206 m)


TREŇČÍN TRAFFIC
 132,015

RWY	MAG direction	TORA (m)	TODA (m)	ASDA (m)	LDA (m)	Strength
03L	027°	970	1 030	1 000	1 000	6 700 kg/0,7 MPa
21R	207°	1 000	1 100	1 000	970	6 700 kg/0,7 MPa
03R	027°	970	1 030	1 000	1 000	6 700 kg/0,7 MPa
21L	207°	1 000	1 100	1 000	970	6 700 kg/0,7 MPa
04	038°	1 425	1 425	2 000	1 255	36/R/B/W/T
22	218°	1 425	1 425	2 000	1 255	36/R/B/W/T



 All the year, snow clearance is provided - snow sweeper, snow plough


 Limited

 Hotels in the town Trenčín. Guest-house at AD.

 NIL

 Limited, O/R PN

 Emergency call: 112 Hospital in the town Trenčín.

 In the town Trenčín and at the airport.

 Bus, taxi

1. Local traffic regulations

At Trenčín airport test flights of overhauled military aircraft are performed. During such a test flight a NOTAM is issued for the airport area laterally limited by a circle of 10 km in radius from the ARP and vertically limited from GND up to 6 000 ft AMSL.

The airport traffic circuits: power driven operations shall be executed west and non-power driven operations east. Information about airport, airport traffic and actual weather conditions will be provided to the flight crews during working hours.

Taxiing to and from stands - according to ground technical assistance.

Parking area for small aircraft (General aviation) - after landing on RWY 03/21 use of the Aeroclub stands is available.

Parking area for helicopters: Available.

Taxiing - limitations: Emergency service helicopter has always priority for taxiing in the air over taxiway C.

School, training and technical test flights - use of RWY: Available.

Helicopter traffic - limitations: NIL.

Removal of disabled aircraft from RWY: Limited.

Restriction for RWY 04/22: Airport is certified for category 2C according ICAO Annex 14 due to the width of RWY strip.

2. Charges

Landing charges:

The rate per each tonne (even initiated) of the maximum take-off mass (MTOM) of the aircraft: 4 EUR without VAT.

Parking charges:

The first hour is not subject to the charges. The rate per each hour and tonne (even initiated) of the maximum take-off mass (MTOM) of the aircraft: 0,500 EUR without VAT.

3. Additional Information

3.1 Frequencies

MON-FRI within OPR HR:

132,015 MHz (119,175 MHz - alternate)

SAT-SUN:

132,015 MHz (119,175 MHz - alternate)

3.2 Bird migrations

Determination of bird migrations with potential hazard to air traffic:

Spring migration period of birds takes place from the beginning of February until the end of April.

Autumn migration period of birds takes place from the beginning of September until the end of November.

The daily interval is not registered due to the approximately low occurrence of birds.

The average flight level of birds is 800 m up to 1 000 m.

3.3 Other subjects operating at the aerodrome:

Flight Schools:

- Seagle Air FTO, s. r. o. - www.seagle.aero
- Aeroklub Trenčín - www.aeroklub-trencin.sk
- JETAGE - www.jetage.sk

Helicopter Emergency Medical Service: ATE Poprad - www.ate.sk